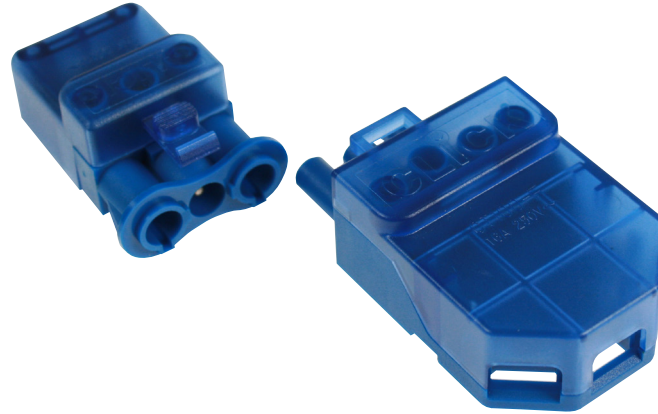


Product Code: CT101C

Description: 250V~ 20A 3 Pole Complete Connector



General Information

Male Dimensions (CT101M)	52mm (W) x 30mm (D) x 22mm (H)
Female Dimensions (CT100F)	68mm (W) x 40mm (D) x 22mm (H)
Material Composition	Cover: Polycarbonate Base & Terminal Housing: Nylon (PA66) Terminals: Silver Plated Brass Terminal Screws: Steel and Yellow Passivated
Maximum Voltage	250V~ 50Hz
Load Rating	20A
Rated Impulse Voltage	4kV
Cable Entry	
Terminal Capacity	3 x 2.5mm ² Max. T&E, 3 x 1.5mm ² Max. Flex
Termination Layout	(CT101M) N - E - L (CT100F) L - E - N - Loop
Inner Core Strip Length	Male: L&N: 20mm; E: 28mm; Female: L&N: 35mm; E: 43mm
Conductor Strip Length	10mm
Cutout Required	Will pass through a 46mm round hole
Ingress Protection	IP20
Operational Temperature	-5°C to +40°C
Warranty	10 Years
Standards	BS 5733: 2010 + A1: 2014

Additional Information

Ensure that the mains supply is isolated before commencing installation. Always refer to the circuit diagram supplied with the relevant product. Bare earth cables must always be covered with appropriate sleeving and wired to the earth terminal. Pre-fabricating wiring systems manufactured to BS 8488 by other manufacturers may not be compatible or safely inter-connectable with this system. Any dangerous compatibility between different manufactures installation coupler systems is not automatically prevented by compliance with IEC 61535.

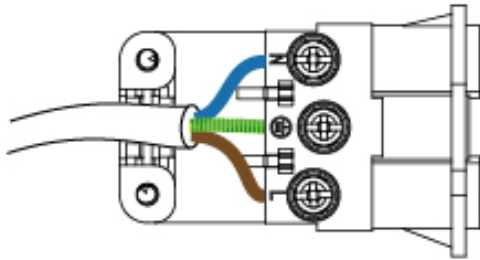
EU Design Registration: 001087837 & EU Design Reg. 805882

Product Code: CT101C

Description: 250V~ 20A 3 Pole Complete Connector

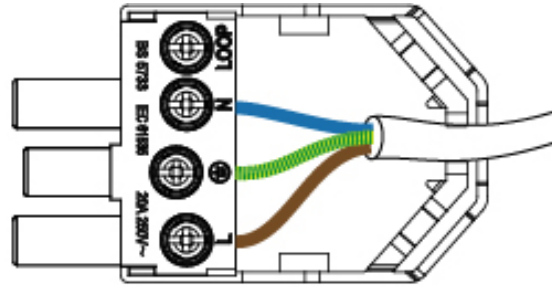
Wiring Example

MALE - CT101M



LOAD

FEMALE - CT100F



SUPPLY