

JC100220

Skypack™ Pro CCT

Skypack™ Pro 6ft 37/51/63/75W 3000K/4000K/5700K IP40 WOP

Features & Benefits

- Multi Wattage and CCT selectable
- Intelligent press release buttons for simple installation
- Suspended LED tray for easy installation
- Press fit terminals loop in loop out with multiple position options
- Rear and end conduit entry points
- Plug and play Emergency and Microwave on/off modules
- Flexible cross mount fixing points
- Keyhole BESA mounting points
- Pre-moulded two way cable restraints
- Improved funnel clip in end caps for ease of installation



General Information

Mounting	Surface/Suspended
Environment	Indoor
Product Group	Battens & Weatherproof
Color Finish	White
Product Shape	Rectangular
Product Range	Skypack™ Pro CCT
Overall Dimensions	1820 x 73.4 x 70
Length (mm)	1820
Width (mm)	73.4
Height (mm)	70
Product Weight(kg)	2.071
Light Source	LED
Light Source Features	3 CCT Selectable
Luminaire Accessories	Suspension kit (JC100160). Remote Control- LEV71930
Recommended product location	Domestic, Commercial and Industrial Applications

Method of fix	Surface or Suspended
Distance from lighted object	0.3m
IP Rating	IP40 (Surface Mount) IP20 (Suspended)
Origin of manufacturer	Made in China
Warranty	5 Year Warranty (See Website for terms and conditions)
Driver manufacturer	JCC
LED manufacturer/type	Runlite/2835
Customs Tariff code**	9405119090

Electrical

Voltage Rating	220-240
Primary Running Current(Amp)	0.4
Inrush current(Amps)	<20A @220V
Operating Frequency Hz	50/60Hz
Secondary running current(mA)	650/820/1000/1250
Constant Current or Constant Voltage	Constant Current
Luminaire Circuit Wattage1	37
Luminaire Circuit Wattage2	51
Luminaire Circuit Wattage3	63
Luminaire Circuit Wattage4	75
Class	I
Output Voltage Max/Range (VDC)	40-56
Total Harmonic Distortion (THD)%	20
EMC Compliant (EN55015)	Yes
Power Factor Correction	0.9
Input Electrical Connections	Live, Earth, Neutral
Dimmable	No

Thermals

Thermal Cut Out	Yes
Operating Temperature Range °C	-20°C~50°C

Performance Data

LED Life (Hours)*	102000
Energy Rating	This product contains a light source of energy efficiency class C
Actual Lumen Output1	5800
Actual Lumen Output2	7600
Actual Lumen Output3	9100
Actual Lumen Output4	10000
Lumens Per Circuit Watt1	157
Lumens Per Circuit Watt2	149
Lumens Per Circuit Watt3	144
Lumens Per Circuit Watt4	145
Standard Deviation Colour Matching - SDCM	< 3

Color Rendering Index	80-89
CRI: Ra	83
Correlated Colour Temperature1	3000
Correlated Colour Temperature2	4000
Correlated Colour Temperature3	5700
Beam Angle °	120
LOR (Light Output Ratio) %	100
Photometry Available	Yes

Construction

Primary Material	Pressed Steel
Outer Diffuser	Polycarbonate
Driver Housing	Polycarbonate

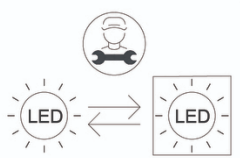
Packaging

Product carton overall dimensions(cm)	185.5 x 8.5 x 8
Product Packaged Weight(kg)	2.4010
Quantity Per Outer Carton	6
Outer carton(L)- cm	187.00
Outer carton(W)- cm	18.7
Outer carton(H)- cm	25.5
Outer carton Net weight- kg	14.41kg
Outer carton Gross weight- kg	15.38kg
Product Bar Code EAN-13 Number	5052544129742
Outer carton Bar Code ITF-14 Number	15052544129749

Standards & Approvals

Manufactured in accordance to	BS EN 60598:2015, 2-1
CE Marked	Yes
UKCA Marked	Yes
Date code/Purchase order No.	Yes
WEEE symbol	Yes
Certificate Of Conformity	Available on request
Accredited Members	LIA, ISO9001-2015, ISO14001-2015

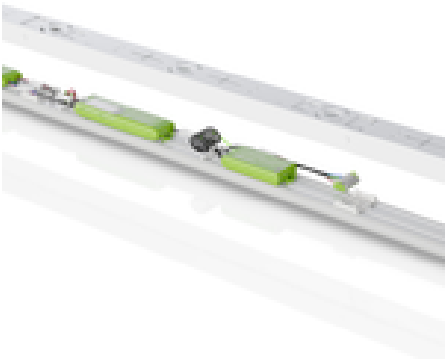
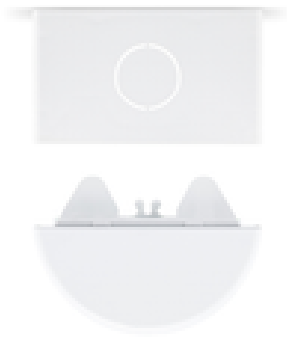
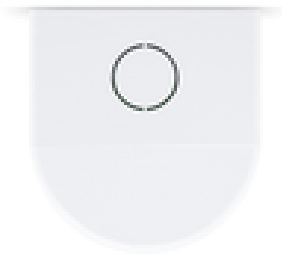


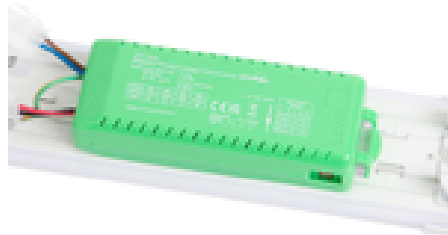
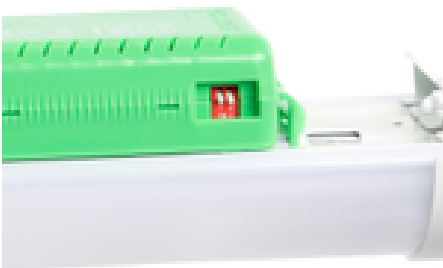
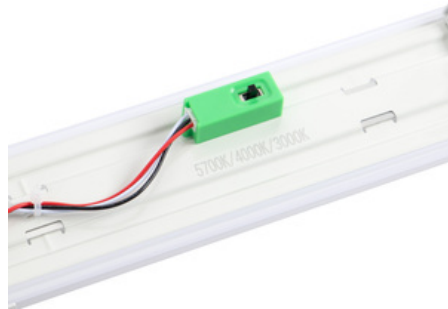


Replaceable light source (LED only) by a professional



Replaceable control gear by an end user





*Hours life stated is an indication of expected L70 chip and light output calculations when operating in optimum conditions. Product warranty period supports the full product during the term given. The L70 hours expectancy is not correlated with the full product warranty term, nor is it a representation of lumen depreciation during the warranty period.

**JCC Lighting Limited makes every effort to ensure that the Customs Tariff information in this document is timely and accurate. However, it's not possible for us to assure the absolute veracity and completeness of that information, as errors may occur. The placement of any inaccurate tariff information is completely unintentional. JCC Lighting Limited reserves the right, in its sole discretion, to correct any errors or omissions to the tariff code and to make any and all changes contained in this document at any time and without notice. It is the sole responsibility of the importer to ensure that the commodity code advised is correct for the products/goods being supplied by JCC Lighting Limited. JCC Lighting Limited does not assume any liabilities, losses, costs, and expenses arising out of or related to the importers use of this commodity code or the information related to the import of any JCC Lighting products.

JCC Lighting LTD, Lux Park, Chichester Business Park, City Fields Way, Tangmere, Chichester, West Sussex, PO20 2FT.

Sales: 01243 838999 (8am to 5pm Monday to Friday) Fax: 01243 838998 | sales@jcc.co.uk | www.jcc.co.uk

Company Registration Number: 03044848 | VAT Number: 918544112