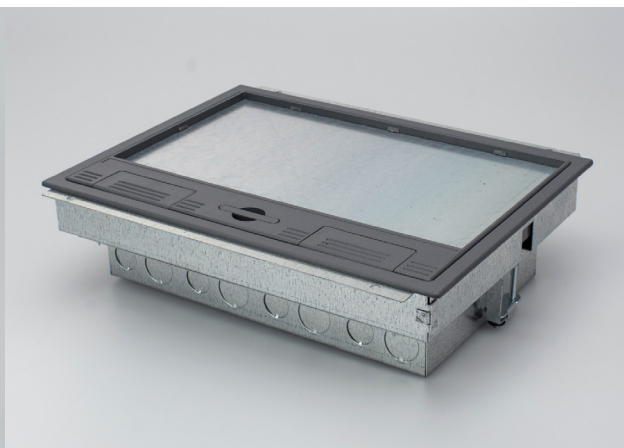


3 Compartment Cavity Floorbox

Model: TFB3/80 (RCD Compatible)



Product Description

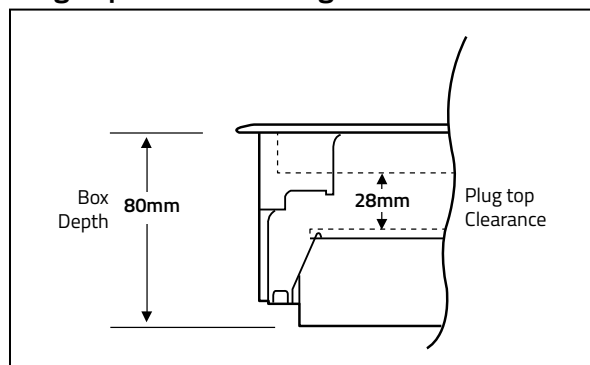
- Floor box manufactured from galvanised steel
- Designed specifically to accept ST0291/RCD Twin RCD Protected Sockets
- 20mm & 25mm knockouts to accept flexible conduit
- Frame & lid moulded from high impact polycarbonate (RAL7031)
- Galvanised lid insert for strength
- Easy grip recessed lifting handle
- Compact design 303mm x 221mm floor cut-out
- Clamp fixing for fast installation
- Large range of accessory plate, colour equivalent: RAL7035
- Suitable for carpeted floors only with standard Frame & Lid
- Clean Earth Sockets available
- IP Rating: IP20
- ABS Frame & Lid fire rating UL94 HB Halogen Free
- Fire rating Euro Class E-F Class 4 None Tested
- ABS Plastic Frame & Lid Load Test 550 KG
- Steel Frame & Lid Load Test 740 KG

Note: he TFB3/80 is designed specifically with a deeper base (wiring) section to accommodate RCD protected sockets

Specifications

Floor Cut Out:	303mm x 221mm
Depth:	80mm
Plug Top Clearance:	28mm
Overall Frame & Lid:	313mm x 230mm
Frame Lid Recess:	6mm
Accessory Plates:	185mm x 89mm

Plug Top Clearance Diagram

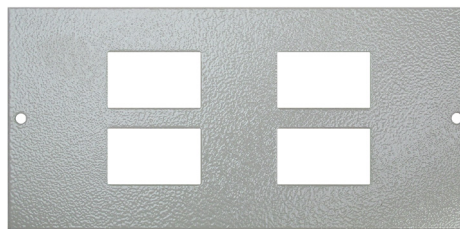


Contact: sales@floorbox.co.uk | **Visit:** www.floorbox.co.uk

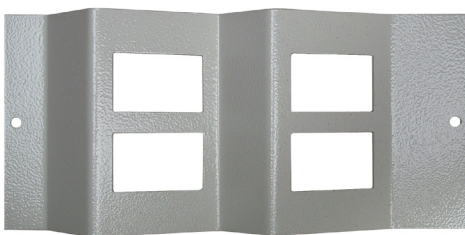
Customer notice: Due to our policy of continuous improvement, Tass Cable Management Ltd reserve the right to change product specifications without notice. Tass Cable Management Ltd © | Floorbox.co.uk © | 2024 | All rights Reserved.



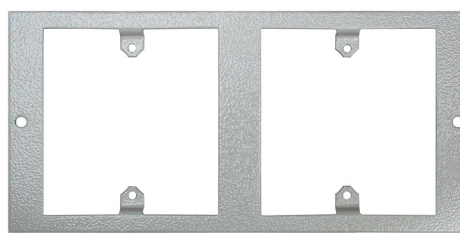
STO283
Blank Plate



STO284
4 Way Data Plate
4 x 37x22mm LJ6C Module Cutouts



STO284/W
4 Way Wave Data Plate
4 x 37x22mm LJ6C Module Cutouts



STO286F [1]
2 x Single Accessory Plate
(Accepts Standard Accessory Plates)



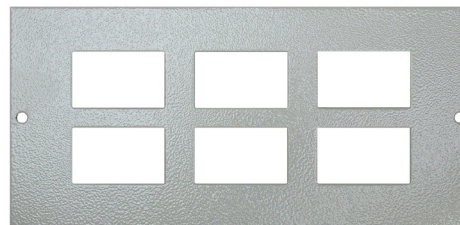
STO286/1FM [1][5]
Flush Single Accessory Plate
(Accepts Standard Accessory Plates)



STO287F [1]
Standard Twin Accessory Plate
(Accepts Standard Accessory Plates)



STO287/FM [1][5]
Flush Standard Twin Accessory Plate
(Accepts Standard Accessory Plates)



STO289
6 Way Data Plate
6 x 37x22mm LJ6C Module Cutouts

Product Information

Product Type
Cavity & Screed Floor Box Plates

Suitable For:
TFB1, TFB3, TSB1, TSB2, TSB3,
SB003, SB004

Plate Dimensions
185mm x 89mm

Material
Galvanised Steel

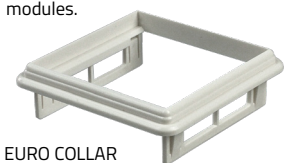
Finish
Leatherette texture Powder Coating

Colour
Equivalent to RAL7035 / Light Grey

Note [1]:
the STO286 & STO287 range of accessory plates are not suitable for floorboxes below 80mm depth due to plug top and wiring clearance.

Note [2]:
Side wired twin switched socket plate (STO291/SW) is recommended for use with TFB3/64 cavity box and TSB3/65 screed box.

Note [3]:
STO294 is supplied fitted with 2 x 50x50mm Euro collars (see below), to be used in conjunction with listed Socket modules.



EURO COLLAR

Note [4]:
RCD & USB sockets only suitable for floorboxes of 80mm Depths or above.

Note [5]:
STO286/IFM & STO287/FM Stepped down 10mm.

Note [6]:
Due to the sensitive electronics used within the USB and RCD sockets it is important to make sure the sockets are installed in a clean and dust free environment.



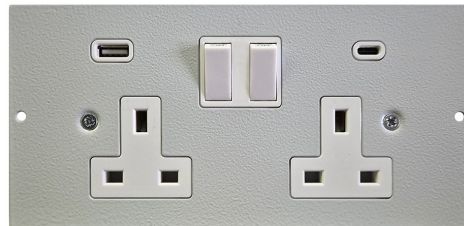
ST0291
Twin Switched Sockets



ST0291/SW [2]
Twin Switched Sockets (side wired)



ST0294 [3]
2 x 50mm Euro Module Plate



ST0291/USB [4] [6]
Flush Mounted Twin Switched Sockets with
USB charging ports (Type A & C)



ST0291/RCD/GB [4] [6]
Twin Switched RCD Protected Sockets



ST0287FM/RCD [4] [5] [6]
Flush Mounted Twin Switched
RCD Protected Sockets

Product Information

Product Type
Cavity & Screed Floor Box Plates

Suitable For:
TFB1, TFB3, TSB1, TSB2, TSB3,
SB003, SB004

Plate Dimensions
185mm x 89mm

Material
Galvanised Steel

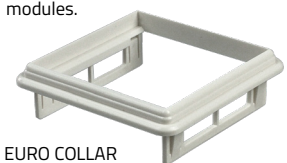
Finish
Leatherette texture Powder Coating

Colour
Equivalent to RAL7035 / Light Grey

Note [1]:
the ST0286 & ST0287 range of accessory
plates are not suitable for floorboxes
below 80mm depth due to plug top and
wiring clearance.

Note [2]:
Side wired twin switched socket plate
(ST0291/SW) is recommended for use
with TFB3/64 cavity box and TSB3/65
screed box.

Note [3]:
ST0294 is supplied fitted with 2 x
50x50mm Euro collars (see below), to be
used in conjunction with listed Socket
modules.



EURO COLLAR

Note [4]:
RCD & USB sockets only suitable for
floorboxes of 80mm Depths or above.

Note [5]:
ST0286/IFM & ST0287/FM Stepped
down 10mm.

Note [6]:
Due to the sensitive electronics used
within the USB and RCD sockets it is
important to make sure the sockets are
installed in a clean and dust free
environment.



MM010WH
13A Standard Socket Module
To be used in conjunction with ST0294



MM038WH
5A Socket Module
To be used in conjunction with ST0294



MM020WH
16A Euro Socket Module
To be used in conjunction with ST0294